

**2021** **PRODUCT CATALOG**

## “I BELIEVE THAT ASSIGNING EXACT TASKS AND DEFINING COMPLETION CRITERIA IS VITAL IN ACHIEVING THE SUCCESS OF A PRODUCT”

Our department is known as Embedded Systems, but over the last year, we've boosted our squad with backend, frontend, iOS and Android, Software Engineer programmers. We have become more universal, creating solutions that can be applied on a wide scale. Curiously, so many details are left out of a client's sight. To illustrate this, let's consider an important SMS message that needs to be sent from our device. For this to happen, our programmers have to prepare applicable peripherals and interfaces, establish the modem, set up network solutions and how the data will look like. We have a lot of elements in the firmware and software that increase the likelihood of errors. That's why test-driven development, unit and regression testing is the price we have to pay for the quality. Sometimes we have a few inside jokes that, for other people, our work is only about writing a code. That is not entirely true- we have to learn the technology and documentation, and only then we can integrate the code to a full body.

The development of a device from point zero gives us more freedom, but the path is not paved with roses. We strive to provide the result to a client as quickly as possible because it allows us to win more time for the testing. That leads to the state-of-the-art condition of an end-product. Until you see the result, there is a number of tasks to complete and this requires smooth teamwork. All the processes and steps have to be definite and structured. I believe that assigning exact tasks and defining completion criteria is vital in achieving the success of a product.

What motivates me personally? Seeing the sign “Made in Lithuania” on an end-product is a feeling that makes me proud and drives me further.

**JUOZAS SADAUSKAS**  
Head of Embedded Systems Department



## “WE ARE TRYING TO LEARN FROM THE EXPERIENCE GATHERED IN THE PAST AND LOOK AT EACH FUTURE DEVELOPMENT IN MORE CREATIVE WAYS”

In our daily work, we do not have such word as “routine”, because every device we develop is different. Theoretically, the stages of development should be similar, but usually, in practice, they are completely different – we are trying to learn from the experience gathered in the past and look at each future development in more creative ways.

I think there are two essential stages in the creation of a device. The first phase involves a lot of discussions when nothing is clear; one original idea can influence the further development of a device in many different ways that not only fulfil technological requirements but also take on new dynamic and unintended characteristics. The second stage is considered the end when you see the device smoothly manufactured in mass production. This can be considered as a kind of exam when all your engineering decisions are verified to be successful.

In the last years, we made progress in developing hardware, as well as in making the external form of the product and user experience. People at Teltonika is the most valuable asset. Listening to each other ideas helps us improve our processes and brings us forward. Mutual trust is invaluable for quality developments. I have a young, ambitious, and professional team that can learn quickly, and new challenges serve as an inspiration for them to make something great. The combination of youthful passion and long-standing experience makes our team special. We have a well-balanced workflow and inspiring teamwork that can lead us to the best one-of-a-kind solutions.

**VALDAS ARLAUSKIS**  
Head of Hardware Department

## INSIGHTS FROM OUR MASTERMINDS

Over the last several years we've launched a dozen of new devices that received positive client appreciation and acclaim from other partners. Behind the success of every device there is an underlying story of dedication, hard work and composition of thoughtful ideas. Ideas becoming reality is a daily goal for our Hardware and Embedded Software Engineer departments.

# TABLE OF CONTENTS

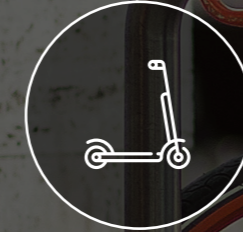
<b>ELECTRIC MOBILITY</b>	<b>6</b>
ELECTRIC FORKLIFT TRACKER <sup>PLUS</sup>	8
ELECTRIC SCOOTER TRACKER <sup>PLUS</sup>	10
ELECTRIC KICK SCOOTER TRACKER <sup>PLUS</sup>	12
E-MOBILITY TRACKER <sup>PRO LTE</sup> & E-MOBILITY TRACKER <sup>PRO M1</sup>	14
<b>PERSONAL TRACKING</b>	<b>16</b>
MINI TRACKER <sup>EASY</sup>	18
MINI TRACKER <sup>PRO LTE</sup> & MINI TRACKER <sup>PRO M1</sup>	20
WORKER BADGE <sup>PLUS</sup>	22
WORKER BADGE <sup>PRO M1</sup> & WORKER BADGE <sup>PRO LTE</sup>	24
WORKER BADGE <sup>PRO WI-FI</sup>	26
QUARANTINE & OFFENDERS' MONITORING SOLUTION	28
PROTECTOR <sup>PRO</sup>	30
<b>ASSET TRACKING</b>	<b>32</b>
ASSET TRACKER <sup>EASY</sup>	34
BLE ASSET TRACKER <sup>EASY</sup>	36
ASSET TRACKER <sup>PLUS LTE</sup> & ASSET TRACKER <sup>PLUS M1</sup>	38
ACCESSORIES	40
FOTA WEB	41
TELTONIKA CONFIGURATOR	42
GLOBAL CONNECTIVITY SOLUTION	43
CROWD-SUPPORT FORUM & WIKI KNOWLEDGE BASE	44
ELECTRIC MOBILITY PRODUCT COMPARISON	48
PERSONAL TRACKERS PRODUCT COMPARISON	50
ASSET TRACKERS PRODUCT COMPARISON	54

# ELECTRIC MOBILITY

With 54% of the world's population living in the cities and the expansion of metropolitan cities, micro-mobility as a phenomenon is rapidly changing our movement routine. A few years back we were only predicting how electric mobility will evolve, but today we can see that more and more cities are going further towards the e-mobility solutions and even creating new types of Mobility for the people. We are calculating that there are more than 1300 different sharing operators in the biggest cities all over the world, covering all of the micro-mobility segments - E-Bikes, E-Scooters, Kick E-Scooters. New solutions from Teltonika Mobility can offer a number of benefits for businesses engaged in providing such services. Teltonika Mobility trackers create additional value to your applications by offering accurate location reporting of transport, remote locking/unlocking, battery health level and status – everything you need to run your business successfully.

01

ELECTRIC KICK SCOOTER



ELECTRIC SCOOTER



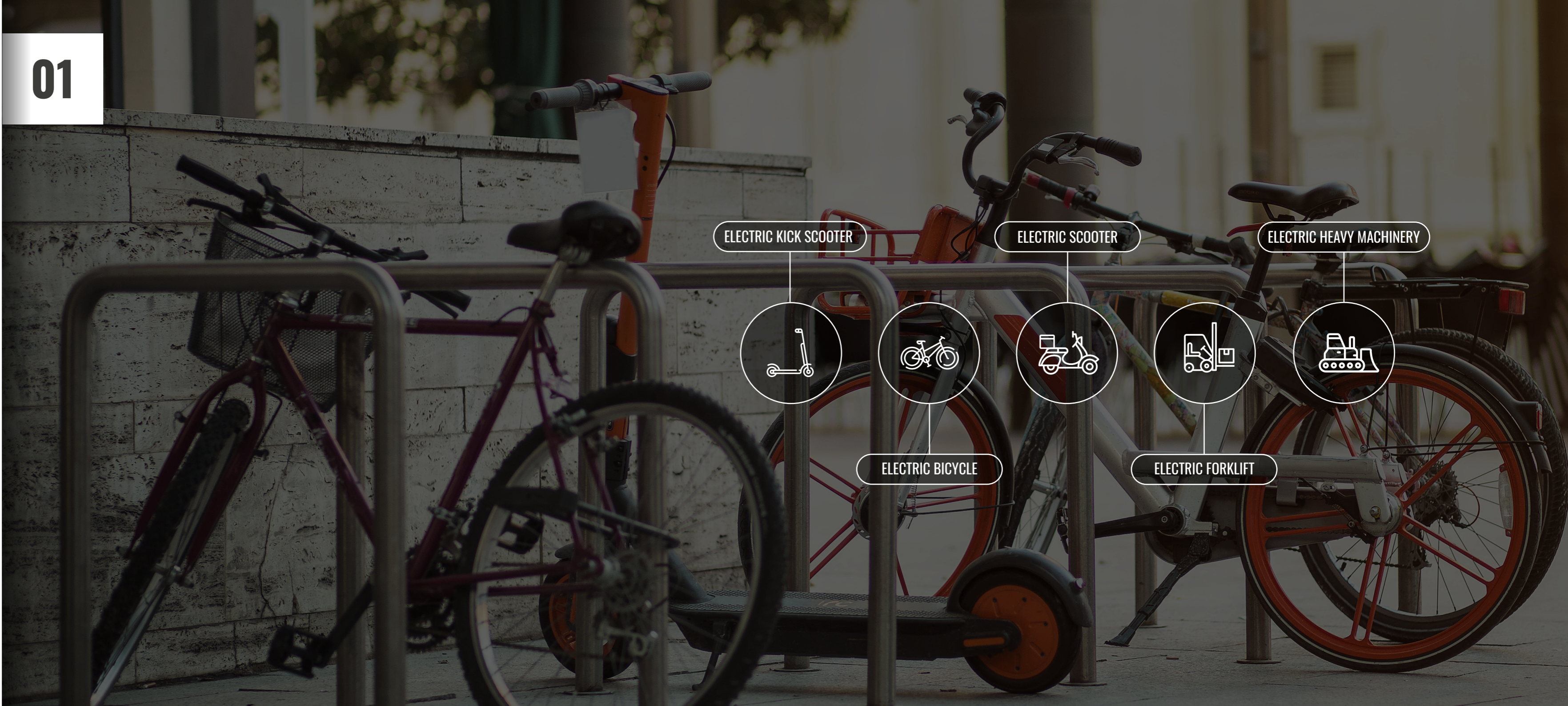
ELECTRIC HEAVY MACHINERY



ELECTRIC BICYCLE



ELECTRIC FORKLIFT



# ELECTRIC FORKLIFT TRACKER<sup>PLUS</sup>

Over the last years industrial digitalization has given businesses an opportunity to transform their forklifts, telehandlers, loaders and scissor platforms into "smart machinery". Connected equipment can improve business' efficiency by reducing or even eliminating the costs caused by accidents, downtime or even a theft. Nowadays one can hear various discussions on how to improve the efficiency and save time while working with forklifts. Alerts and system reporting, performance management and control, predictive maintenance and work hours monitoring are among key factors in forklift management. Our E-FORKLIFT TRACKER<sup>PLUS</sup> (TFT100) comes as a solution to deal with the mentioned aspects. It is a device for smart machinery management that extracts required data from device (including CAN data) and adds more value to your management application.



## DIFFERENT INTERFACES

CAN, RS232, RS485, UART interface depending on chosen modification



## INGRESS PROTECTION

Water and dust resistant for outdoor integrations (IP67)



## POWER SUPPLY

Wide power supply voltage range for integration variety (10-97 V)



## DATA READING SUPPORT

Manual CAN and J1939 support for data reading



## OTA UPDATES

Convenient OTA (over-the-air) updating through user-friendly applications



## BLUETOOTH

Bluetooth for external devices and Low Energy sensors



## E-FORKLIFTS MANAGEMENT

Due to equipment malfunction, you lose money on your employees and manufactured products, whereas daily operational costs keep running and customers may doubt about taking your services. With real-time data about forklift's performance, one can achieve efficient fleet management and avoid big costs.



## E-UTILITY TRUCKS MANAGEMENT

With cities all over the world aiming to have a zero-emission fleets, our tracker is perfectly designed to fulfil the needs of utility management companies. For these companies it is essential to have a stable functioning machinery, because any technical problems can lead to notable financial losses and complaints from customers and contractors. Tracking places and time of waste movement and unloading, street sweeping zones, remote diagnostics of machinery health, detection of idling – all these aspects matter when it comes to efficient supervision of waste trucks.



## AIRPORT TRANSPORT MANAGEMENT

Time is money. This notion would undeniably fit for any businesses that ensure minute-to-minute operations to keep airport traffic smoothly flowing. Coordination of electric ramps, buses and other vehicles could not be imagined without constant supervision of machinery and already prepared resources in case of an accident. Our device can offer predictive maintenance to various interfaces such as coordination of electric ramps, lifts, carts and other electric transport to make sure these reach maximum efficiency.



## HEAVY E-MACHINERY

It would be fair to say that heavy machinery is becoming electric in recent years. Backhoes, scissor lifts, excavators, dozers can become more effective with the smart machinery management mode. Since this type of equipment costs a fortune, our device helps to reduce exploitation costs by providing essential data about machinery performance and predictive maintenance, combined with asset trackers you are covering the full construction site.

# ELECTRIC SCOOTER TRACKER<sup>PLUS</sup>

Biggest cities in the world already have a functioning service of electric scooters sharing and there are obvious reasons for it. It mitigates heavy traffic problems and contributes to protection of environment, while sharing operators provide easy to use services. We have developed E-SCOOTER TRACKER<sup>PLUS</sup> (TFT100) to support your business to get the most out of it. Communication and data collection from e-scooter ECU allows you to manage your fleet professionally. You can use the device not only for sharing, but as well as for food delivery applications, anti-theft, cargo delivery. With support of various scooter manufacturers we expand the use of our device and fulfil your needs!



## E-SCOOTER SUPPORT

Applicable to various E-Scooter models (Askoll, Govecs, Vmoto Soco)



## DIFFERENT INTERFACES

CAN, RS232, RS485, UART interface support depending on chosen modification



## INGRESS PROTECTION

Water and dust resistant for outdoor integrations (IP67)



## OTA UPDATES

Convenient OTA (over-the-air) updating through user-friendly applications



## EXCEPTIONAL POWER SUPPLY

Wide power supply voltage range for integration variety (10-97 V)



## CONFIGURABLE I/O

Configurable analog and digital inputs and outputs



ORDER NOW!



## E-SCOOTER SHARING

E-Scooters sharing continues to be on the rise across the globe, while for service providers this means an increase in responsibility and more challenges in managing their fleets. With our tracker in place, you would receive live data to your user program about e-scooter fleet's battery percentage, current/average speed, predicted remaining range and other important operational information. Wherever your e-scooter is based at, determination of accurate location, detection of falling down, jamming or geofencing disruption stand for high safety standards. Direct communication with scooter's ECU can be considered one of the main advantages.



## CARGO DELIVERY

Teltonika has prepared a solution to efficiently track the performance of e-bikes fleet. All the data concerning driver's journey (distance travelled, speeding, the exact location and time spent) is displayed on real-time online software. After a day is completed, one would be able to see the report of the routes employee has used and travelled distance in the online tracking software. Such report also includes valuable information about e-bike performance - battery levels, charging needs or maintenance issues.



## FOOD DELIVERY

With exponential growth of users, food delivery businesses need to put out services in a timely fashion and ensure that every minute counts. Our tracker ticks all the boxes when we discuss accurate fleet monitoring, wide integration and safe maintenance. The information would include distance travelled, exact location, geofencing alerts, and time spent on the e-scooter. Our high-gain GNSS/GSM antennas and internal flash memory will not let any information slip out of your sight, thus you will benefit from a well-constructed supervision.



## POST OFFICES

Using our device in Post Offices can solve a bureaucratic and time-consuming headache for the drivers, as they would no longer need to fill fuel and mileage reports by hand. Such information would be automatically accessed via an online platform. In addition, high-quality location tracking provides accurate reports about routes travelled that allows to think of cost-effective ways for using a vehicle.

# ELECTRIC KICK SCOOTER TRACKER<sup>PLUS</sup>

Millions of users, millions of app downloads and growing engagement – there are number of indicators of booming kick e-scooter sharing worldwide. How to ensure smooth operations and efficiency in this competitive world? We have prepared a perfect solution for you to occupy this niche of micro-Mobility. From Corporate sharing and Free-Floating to Anti-theft applications – we are ready to help our clients to achieve the best performance and increase added value. Our tracker ELECTRIC KICK SCOOTER TRACKER<sup>PLUS</sup> (TST100) for kick e-scooters will allow you to enter and conquer the market. Our 20-year experience in developing GPS trackers will ensure that!



## VARIOUS KICK E-SCOOTER SUPPORT

Applicable to Segway ES2/ES4/Max, Xiaomi M365 and FitRider models



## CONVENIENT SYSTEM UPDATE

Firmware and configuration update via FOTA



## LOCK UNLOCK

Remote lock/unlock feature



## INGRESS PROTECTION

Protection against solid objects and water (IP65)



## SMART DATA READING

Data reading from the scooters ECU (UART interface)



## SOLID POWER SUPPLY

Wide power supply voltage range for integration variety (8-50 V)



ORDER NOW!



## CITY SHARING

What if not through city sharing you can accomplish the best utilisation of Kick E-Scooter Tracker<sup>EASY</sup>? More and more cities pave way for kick e-scooter sharing platforms to boost their economies. Remote fleet management, safe outside usage in various weather conditions and geofencing scenarios makes our tracker a great fit for your business.



SEGWAY



FITRIDER



XIAOMI

We have added the scooter models that we support. Full support comes with Segway ES2, Segway ES4, Segway MAX G30, Segway MAX PRO, Fitrider T2, Fitrider T2S, Xiaomi M365, Xiaomi M365 PRO, Xiaomi 1S. For more supported scooters please contact us directly. Why it is important? You can choose the Scooter vendor and see if there is a scooter in stock – if not, look for another one. No need to wait for refill of the scooter if there is none of them in stock.



## CORPORATE SHARING

The increasing popularity of corporate sharing slowly eliminates the need for privately owned vehicles. Reduction of parking demands and CO2 emission are among the reasons why businesses are moving in this direction. If your enterprise's policy relates to these factors, our tracker will help you to conveniently monitor your employees' activities on a kick e-scooter – from time spent on it to the kilometres driven.



## ANTI-THEFT

Make sure that your fleet is protected with numerous safeguarding measures, provided by our tracker. For this we have specifically designed scenarios: fall down detection, jamming detection, unplug detection, manual and auto geofencing.

# E-MOBILITY TRACKER<sup>PRO</sup> LTE & E-MOBILITY TRACKER<sup>PRO</sup> M1

Micro-Mobility is expanding at a rapid pace and various business niches contribute to its popularity. Electric bikes are not an exception and we've come up with our solution that is a game changer in the current market. E-MOBILITY TRACKER (EMB1XY SERIES) supports an extensive list of electric vehicles with a number of interfaces. The tracker also extends the range of your abilities to create an added value to the customer and at the same time helps you to enrich your business verticals. Track, monitor and keep your bikes safe and secured. Teltonika EMB100-105 is a worldwide IoT tracker, designed for e-bikes, but can also convert the full scope of electric mobility. The device is driven by GNSS, GSM and Bluetooth connectivity, while LTE CAT and M1 connectivity make this tracker usable with the newest and cost-efficient technologies in almost every corner of the world. It is designed for various business cases from simple tracking and security to advanced management of e-bike fleet. Integrated ECU data reading will expand your capabilities even more!

COMING SOON



ORDER NOW!

\*Contact Teltonika Mobility for more information



## VARIOUS POWER-TRAIN SUPPORT

Bosch\*, Bofang\*, Shimano\*, and other power-train support



## OTA UPDATING

Convenient OTA (over the air) updating through user-friendly applications



## CONVENIENT MOUNTING

Different mounting options predefined



## INGRESS PROTECTION

Water and dust resistant for outdoor integrations (IP67)



## FEATURE INTERGATION VARIETY

Possible integration of battery levels and battery health features



## DIFFERENT INTERFACES

UART, CAN, RS485 interface support depending on chosen modification



## POST OFFICE & PARCEL DELIVERY TRACKING

Imagine the bureaucratic and time-consuming headache for the postal or parcel delivery drivers, who need to fill fuel and mileage reports by hand. With our E-Mobility tracker, this is no longer a problem, because such information can now be automatically accessed via an online platform. Meanwhile, real-time tracking features would be useful both for supervisors and end-users to track their delivery whereabouts.



## FOOD DELIVERY PLATFORMS

Electric bikes continue to play a pivotal role in the expansion of food delivery platforms. E-Mobility tracker is perfectly suited for such platforms, as it allows extensive options in tracking and monitoring bike activities. Besides, scenarios of jamming, towing, unplugging or speeding detection ensures the safety of your fleet.



## E-BIKE SHARING

Traditional bike-sharing platforms lose its popularity and it is being replaced by modern e-bike sharing platforms. With our solution, it is not too late to jump on the bandwagon and reap profits. Accurate location monitoring, safety scenarios, integrated ECU data reading and convenient OTA (over the air) are the functionalities that can bring stability and success to your e-bike sharing business.



## CARGO DELIVERY

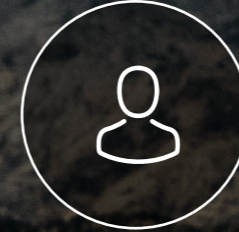
Teltonika has prepared a solution to efficiently track the performance of e-bikes fleet. All the data concerning driver's journey (distance travelled, speeding, the exact location and time spent) is displayed on real-time online software. After a day is completed, one would be able to see the report of the routes employee has used and travelled distance in the online tracking software. Such report also includes valuable information about e-scooter's performance - battery levels, charging needs or maintenance issues.

# PERSONAL TRACKING

Personal trackers have been a big part of Teltonika since the very beginning. We have always been closely monitoring changes in the market, as we regularly adapt our devices to more use cases according to the demand and personalized needs from the clients. Powered by additional sensors, our trackers can be crucial in ensuring high-quality tracking indoors or outdoors. Over the last decade, we've seen a lot of ways how personal tracking has been established in different kinds of organisations. For example, saving money is being achieved with the solutions of workforce monitoring, and that has become a normal practise in various businesses – from warehouses to manufacturing facilities. With the help of personal trackers, safety can now be established in the routine workday of lone workers, social workers, the elderly, governments or city councils. More and more effective solutions are being offered to hospitals and care institutions that rely on minute-to-minute patient monitoring. You might ask us, what's behind these fancy words? We invite you to look at our latest solutions and use cases.

02

PERSONAL TRACKING



WORKFORCE MANAGEMENT AND TRACKING



ELDERLY TRACKING



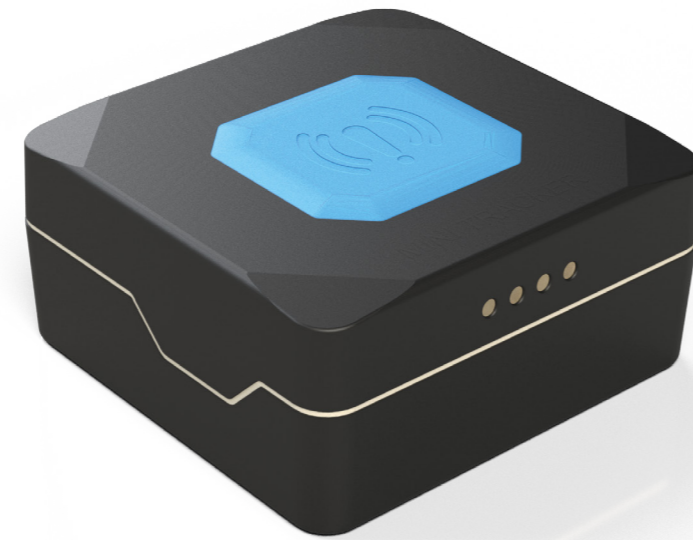
ALERT & EMERGENCY

PET TRACKING



# MINI TRACKER<sup>EASY</sup>

Our multi-functional personal trackers Mini TrackerEasy (TMT250) is designed for various tracking applications. With a robust, and IP67 water-resistant case and a large alarm button, the device is perfect for tracking people, assets and pets. This autonomous personal tracker is equipped with GNSS, GSM and Bluetooth connectivity. The unit perfectly fits for outside use in harsh conditions, while large battery capacity expands application range where long battery life is needed. In addition to that, TMT250 supports hands-free, firmware and configuration update via Bluetooth. We are glad that our tracker helps thousands of people all over the world and you will be able to learn more about that further.



**INGRESS PROTECTION**  
Water and dust resistant for outdoor integrations (IP67)



**BLUETOOTH**  
Bluetooth for external devices and Low Energy sensors



**OTA UPDATES**  
Convenient OTA (over-the-air) updating through user-friendly applications



**ROBUST**  
Robust, small and easy to install



**SPECIAL SCENARIOS**  
Man-Down, Alarm & No Movement scenarios



**BATTERY AUTONOMY**  
Up to 24 hours of battery autonomy, depending on configuration



## ALERT & EMERGENCY

Consider that your staff is exposed to potential assaults or any kind of harmful activity in their workplace. By discreetly placing the tracker under the table or even putting it in the pocket, one can be sure that one push of a button will provide instant help. The emergency signal can also be transmitted in case of man-down or no-movement scenarios.



## ELDERLY TRACKING

Elder people are one of the most vulnerable parts of our society and more reliable solutions are needed to provide appropriate assistance. Monitoring of a person's real-time location allows enables an opportunity for them to travel without risk of getting lost, while the man-down function instantly alarms about the potential accident that occurred.



## EMERGENCY SOLUTION AGAINST VIOLENCE

Domestic violence and violence in the workplace, even in 2021, can often be found in police reports. How to prevent this from happening? Our MiniTracker can be installed safely in the workplace, while the people who have previously encountered violence in their home environment, can discreetly call for an emergency. That is achieved with the alarm button that can be programmed to make a call or send a SMS message.



## OFFICE WORKERS SECURITY

Workplace safety is one of the most important factors defining employees' happiness and the overall public trust of businesses and institutions. How our tracker ensures safety? Whenever an employee feels uncomfortable or unsafe, he can discreetly reach for the button, safely mounted under the desk or counter. After the button is pressed, the alarm notification with an employee's location is sent to the real-time platform. Man Down & No Movement alerts and panic button serve as a key to better protection of worker and that's what our tracker can offer.

# MINI TRACKER<sup>PRO</sup> LTE & MINI TRACKER<sup>PRO</sup> M1

We update our product line by rebranding our products and creating new identity. Our latest edition of Mini Trackers Pro LTE and Pro M1 is boosted with even better accuracy and extended global coverage. Therefore you can track and gather all the necessary data from your worksite located almost anywhere. Our small, yet robust device with sleek design is adapted to various situations – from monitoring street cleaners efficiency to helping security guards. Man-Down, Alarm & No-Movement scenarios contribute to safety assurance.

IP67

**INGRESS PROTECTION**  
Water and dust resistant for outdoor integrations (IP67)



**BLUETOOTH**  
Bluetooth for external devices and Low Energy sensors



**ROBUST**  
Robust, small and easy to install



**SPECIAL SCENARIOS**  
Man-Down, Alarm & No Movement scenarios



**OTA UPDATES**  
Convenient OTA (over-the-air) updating through user-friendly applications



**BATTERY AUTONOMY**  
Up to 1 month of battery autonomy in asset tracking mode

COMING SOON



Concept design\*



GET UPDATED ON REALESE!



## STREET CLEANERS & CARTS

Over the last years, street cleaning becomes even more advanced, because the largest cities in the world seek to ensure the highest standard of procedures. This can be achieved with the implementation of a tracking system, powered by our MiniTracker. Productivity issues can be spotted in real-time, as no-movement alert and accurate location can be instantly transmitted to the online worker's management system.



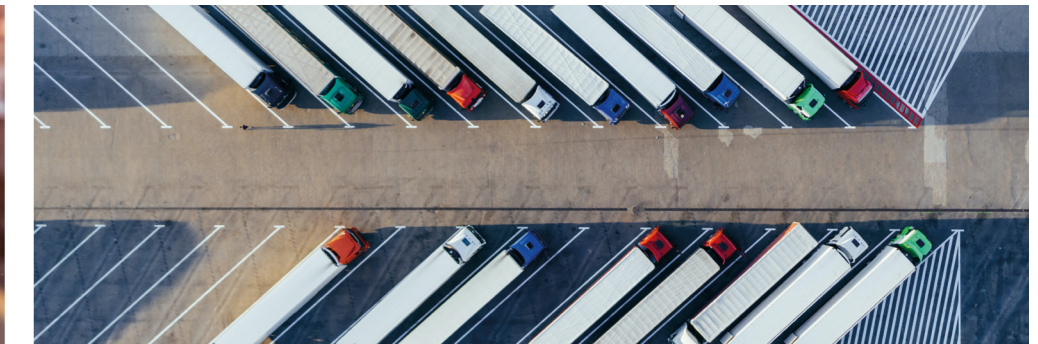
## SECURITY GUARDS

Verbal aggression, threats of assault, and physical acts against them are among the most prevalent issues security guards are dealing with daily. To avoid costly outcomes, supervisors have to establish safety measures and provide help for security guards, when needed. For this to work smoothly, we bring forward the MiniTracker solution. If felt in danger, the security guard discreetly calls for help with a push of a button.



## LONE WORKER PROTECTION

The ideas of protecting lone workers are being championed for years, and employers have to ensure the safety of their workers if they do not want legal, moral and financial consequences. Whether it is a construction site or social worker business trip, Man Down & No Movement alerts and panic button serve as a key to better protection of worker and that's what our tracker can offer.



## DRIVERS FLEET MANAGEMENT

Company drivers are usually working alone and their safety should be at the top of every manager's list. Distributing MiniTracker to fleet members can be beneficial because, in case of emergency, help can be immediately sent to the exact location of a driver. This emergency is particularly relevant when there is no movement for a particular amount of time or when the person encounters danger and clicks the panic button.

# WORKER BADGE<sup>PLUS</sup>

WORKER BADGE<sup>PLUS</sup> (or GH5200) was crowned as Teltonika Mobility best-selling device in 2020 and there are compelling reasons for it. This autonomous tracker is designed for everyone who performs activity without close or direct supervision of others, for example, healthcare, maintenance, social and lone workers or employees working out of standard working hours. The device acts as a solution to ensure social distancing whilst collecting data on workers' actions over the working day. Strong battery, High-quality voice communication for emergencies, five programmable buttons, man-down and no movement scenarios are among the key functions that make this device most wanted in the market.

**BEST SELLER**



**TWO-WAY VOICE COMMUNICATION**  
Two – way voice communication



**BLUETOOTH**  
Bluetooth for external devices and Low Energy sensors



**CONFIGURABLE BUTTONS**  
5 configurable buttons



**SLIM DESIGN**  
Slim design for comfortable everyday use



**SPECIAL SCENARIOS**  
Man-Down, Alarm & No Movement scenarios



**CALL OPTIONS**  
Up to 5 Call/SMS recipients in case of emergency event



## SOCIAL DISTANCING SOLUTION

Millions of companies and institutions have been forced to change their work routine because of the COVID-19 pandemic. We came up with a solution that helps to ensure safety at work. With the help of BT and personal ID identification, Worker Badge exhibits buzzer sound alarm notification if proximity rules are violated, while real-time software gathers all the information about the list of contacts, time of distance breach and employees who performed a breach.



## CONSTRUCTION WORKERS

Time is of the essence and safety is a top priority – that can be a straightforward definition of construction works. This use case contributes to solving a few problems: work time monitoring and safety assurance in the workplace. With the device on their neck or belt, the workers know that they are being tracked, so they won't have time for distractions. Whereas, when they fell down, the man-down feature comes into play and they can also communicate about emergency via microphone.



## TELECARE

The hospitalized at home or those who have difficulties taking care of themselves are distributed with our GH5200. First, the device constantly monitors the location of a person (outside or inside) and there is no risk for him to get lost since all the data is transmitted to the online platform. Secondly, if a person feels unwell, he may choose from a few pre-programmed buttons to activate different scenarios. For example, he can make a call to a caregiver or nursing home staff to state his problem. Also, with just one click, the patient can enable emergency mode that sends an instant notification to the real-time platform. In case of a sudden fall down, a man-down alarm is being instantly sent to the supervising persons.



## WAREHOUSE STAFF

Poor safety management and failure to measure performance are among the most common problems of unorganized staff. Companies are losing thousands of dollars per employee who is inactive at work and we arrive to solve this problem. Worker Badge accurately monitors workers' whereabouts, and supervising staff can determine whether an employee is performing their duties or not. Warehouses can be also dangerous, thus, it serves as a safeguarding measure with the functionality of man-down, no-movement alert and instant call for help.

# WORKER BADGE<sup>PRO</sup> M1 & WORKER BADGE<sup>PRO</sup> LTE

This autonomous tracker, upgraded with M1 or LTE connectivity, is designed for everyone who performs activity without close or direct supervision of others. Use cases may comprise various industries: from police firefighters and office workers to maintenance workers or employees working out of standard working hours. Since data transmission is exclusively provided by M1 or LTE (CAT-1) connectivity, clients can employ our devices in almost every corner of the world. With global coverage and high-quality connectivity standards, our reliable tracker is surely a hit not to be missed for any business owner.

COMING  
SOON



**TWO-WAY VOICE COMMUNICATION**  
Two – way voice communication



**BLUETOOTH**  
Bluetooth for external devices and Low Energy sensors



**CONFIGURABLE BUTTONS**  
5 configurable buttons



**SLIM DESIGN**  
Slim design for comfortable everyday use



**SPECIAL SCENARIOS**  
Man-Down, Alarm & No Movement scenarios



**CALL OPTIONS**  
Up to 5 Call/SMS recipients in case of emergency event



## POLICE, FIREFIGHTERS

Danger and quick reaction can probably act as synonyms for the routine life of policemen and firefighters. They are working in environments that are risky and dangerous and our Worker Badge is perfectly suited to ensure the safety that is required in these situations.



## OFFICES, BANK SECURITY

The problem of violence and aggression at the workplace is still a concern. Worker Badge can be an effective solution if your business is operating from the office, where your employees can encounter violence and aggression from the customers, clients or members of the public. One of the most effective solutions, embedded in our tracker, allows workers to discreetly ask for help in case of emergency. Pre-programmed buttons can integrate various customized messages or scenarios, while man-down and no-movement functionalities help to ensure safety.



## LONE WORKER PROTECTION

The ideas of protecting lone workers are being championed for years, and employers have to ensure the safety of their workers if they do not want legal, moral and financial consequences. There are millions of lone workers that perform maintenance duties, work in a construction site or serve as social workers. With our Worker Badge you can safeguard your employees by implementing various features: pre-defined Amber Alert, man-down & No Movement alerts, pre-programmed SMS and two-way voice communication.



## SOCIAL WORKERS

The work of social workers can be considered as challenging, because unpredictable situations may lead to physical acts of violence against them. In the heat of the moment, our solution can emerge as vital safeguarding measure for employees. Worker Badge can be pre-programmed for different scenarios, for example, a call or SMS to emergency services or sending an alarm in case of man-down or no-movement situation. Accurate GPS tracking will help easily track your employee.

# WORKER BADGE<sup>PRO</sup> WI-FI

Accuracy, convenience and reliability – a new edition of Worker Badge is a perfect package for quality indoor tracking. The device is driven by Wi-Fi and 2G modules that do not only allow to track multiple users at the time but also provide reliable tracking in the places with weak or no connection, for example, mining or tunnelling sites, warehouses and other obscure sites. Besides, the new tracker ensures a high-standard proximity monitoring, and offers improved quality of two-way communication and automated alarms in case of an emergency event. Finally, it expands your options in different usage scenarios by various pre-defined configuration settings.

COMING SOON



**TWO-WAY VOICE COMMUNICATION**  
Two – way voice communication



**PROXIMITY**  
Distance violation monitoring for COVID-19 prevention



**CONFIGURABLE BUTTONS**  
5 configurable buttons with 3 possible configurations



**SLIM DESIGN**  
Slim design for comfortable everyday use



**SPECIAL SCENARIOS**  
Man-Down, Alarm & No Movement scenarios



**INDOOR TRACKING**  
Improved indoor tracking with Wi-Fi technology



## INSIDE WAREHOUSE TRACKING

If you run a warehouse, then you know how it is important to keep it efficient and operate at fast pace. Wasted time in warehouse activities can lead to delays in production or delivery that cost a lot of money. Thus, our tracker acts as a solution to monitor employees' work time and collect necessary data about their inactivity. In addition, Worker Badge can help to ensure safety in alarming the employer about man-down or no-movement scenarios. The accuracy of tracking is ensured with the help of Wi-fi network installed in the warehouse.



## HOSPITALITY WORKERS MANAGEMENT

Managing a team of employees is never easy but in the hospitality industry it may be a more challenging task, Hotel personnel, event staff...



## MINING WORKERS MANAGEMENT

It would be no lie to say that miners have one of the most dangerous jobs in the world, as there are common dangers of rockfall, ground failure or fire explosion. Since mines are sometimes hundreds of metres behind the earth surface, one of the most common problems can be communication, especially in a case of emergency. There is always a chance of worker going down or being stuck somewhere. For this reason, our Worker BadgePRO Wi-Fi tracker serves as a safety solution with pre-configured buttons and alarm scenarios that would allow a quick call for help. Connected on the same Wi-Fi grid, Worker Badges will help to monitor mining workers activity easily.



## CONSTRUCTION WORKERS MONITORING

Time is of the essence and safety is a top priority – that can be a straightforward definition of construction works. This use case contributes to solving a few problems: work time monitoring and safety assurance in the workplace. With the device on their neck or belt, the workers know that they are being tracked, so they won't have time for distractions. Whereas, when they fell down, the man-down feature comes into play and they can also communicate about emergency via microphone.

# QUARANTINE & OFFENDERS' MONITORING SOLUTION

Our first wearable device is designed for an easy and effective quarantine monitoring, offenders monitoring and traceability. The identified Home Zone and Geofencing does not let the person leave the place without getting tracked and noticed. The accurate and live monitoring allows to receive an immediate notification, whether the person has removed the device or left the Home Zone. Also, this device is comfortable and easy to use, with the water-resistant case it is suitable for outdoor activities and use in the shower. Moreover, the handy alarm button is always there to call for help, in case of emergency.



**COMFY WEARING**  
Easy and adjustable wearing



**WATER-RESISTANT**  
IP67 water-resistant



**SPECIAL SCENARIOS**  
Man-Down, Alarm & No Movement scenarios



**ALERT BUTTON**  
Alert button on demand is integrated into the unit



**EASY MAGNETIC CHARGING**  
Easy charging without removing the unit



**BLUETOOTH**  
Bluetooth for external devices and Low Energy sensors



GET UPDATED ON RELEASE!



## PEOPLE ON QUARANTINE MONITORING

Since the COVID-19 pandemic continues to exist almost in every part of the world, any violation of home quarantine can present a great risk and cost to public health. Our solution helps to prevent this from happening in a cost-effective and privacy-preserving way. First, the tracker is attached to the confinee, while Bluetooth beacons are installed at home for the duration of the quarantine. If the quarantined person leaves his home, the Home Zone functionality provides automatic notification to the online tracking platform. Also, the Geofencing functionality allows marking the quarantine region which is being tracked with GPS.



## PEOPLE ON PAROLE MONITORING

Parole can be defined as conditional freedom for a person who is released from prison. The parolees sometimes are being checked at home by a parole officer, however, tracking the offender whereabouts can provide peace of mind both for the authorities and the victims. Our solution is a perfect tool to track the parolee, especially those who can try to breach their parole conditions. For example, in case of a bracelet breach, the Tamper detection sends an immediate alert, while the Accelerometer sensor provides the most accurate data about movement. If the confinee breaches the geofencing boundaries, the police receive immediate notification and details of the offender's location.



## OFFENDERS MONITORING

Remote monitoring relieves the prison system of the costs of jailing non-violent offenders awaiting trial. Our wearable device is designed for accurate and real-time offenders monitoring. The solution does not require any frequent manual input of a confined person and manpower from the controlling unit in order to check the location remotely. However, in case of a bracelet or geofence breach, the offender would be quickly arrested.

# PROTECTOR PRO

You asked for it, we are working on it. After years of consideration we have finally started working on rugged, shock-resistant and, probably, undestroyable unit. This device will be designed for harsh conditions and outdoor wearing. Rumoured to have informative LCD screen, UWB technology, LTE connectivity and many more features that cover even most picky customer needs. The unit will be coming soon, stay tuned for more!

COMING SOON



GET UPDATED ON REALESE!



## CONNECTIVITY

LTE connectivity for worldwide coverage



## UWB

Latest technology for the indoor tracking and positioning



## SOUND

High Quality Alarm and loud clear voice



## LCD SCREEN

Live information about connectivity and status



## UNDESTROYABLE

Rugged, shock resistant, IP67+



## EASY CONTROL

Easy control with main alert button and menu management



## OIL RIG WORKER

Probably the hardest work with the harshest conditions there is. Danger as - oil spill, rock fall, rain, debris, ground failure - you name it. There is always a chance to fall down, get wet or loose connection. For this reason we are upgrading our product line with the most durable unit so far - PROTECTOR PRO SERIES. Connected and always on unit will help you to monitor activity without any interruption or failure.



## LONE WORKER PROTECTION

The ideas of protecting lone workers are being championed for years, and employers have to ensure the safety of their workers if they do not want legal, moral and financial consequences. Whether it is a construction site or social worker business trip, Man Down & No Movement alerts and panic button serve as a key to better protection of worker and that's what our tracker can offer.



## MINING WORKERS MANAGEMENT

It would be no lie to say that miners have one of the most dangerous jobs in the world, as there are common dangers of rockfall, ground failure or fire explosion. Since mines are sometimes hundreds of metres behind the earth surface, one of the most common problems can be communication, especially in a case of emergency. There is always a chance of worker going down or being stuck somewhere. For this reason, our Worker BadgePRO Wi-Fi tracker serves as a safety solution with pre-configured buttons and alarm scenarios that would allow a quick call for help. Connected on the same Wi-Fi grid, Worker Badges will help to monitor mining workers activity easily.



## CONSTRUCTION WORKERS MONITORING

Time is of the essence and safety is a top priority - that can be a straightforward definition of construction works. This use case contributes to solving a few problems: work time monitoring and safety assurance in the workplace. With the device on their neck or belt, the workers know that they are being tracked, so they won't have time for distractions. Whereas, when they fell down, the man-down feature comes into play and they can also communicate about emergency via microphone.

# ASSET TRACKING

Did you know that almost 50 billion dollars are lost globally each year because of cargo loss?\* Poor asset tracking solutions or an absence of any solutions contribute to the heavy losses companies experience in broad daylight. Nothing gives you a greater advantage in business than knowing the location of all your assets. In the world we live today, not knowing where your asset is and what movements they make can be a challenge, as more businesses rely on tracking technologies to establish their position in competitive markets. With the overwhelming potential of IoT and cloud-based software, asset tracking has long been implementing in various industries that rely on their assets for generating revenue. What are the added values? First, asset tracking introduces enhanced prevention from theft and misplacement of assets – it can be a nightmare to be in a cycle of buying new equipment or parts because they were stolen. Second, constant asset management in the supply chain can help to cut delivery time and identify sources of deviation, while also ensuring that the asset maintains its integrity. Not everything is connected to trucks, vehicles with external power supply and has a driver around. There are millions of assets in the world that are difficult to locate – they can be left for days in remote locations before getting any supervision. Our Asset Tracking solutions may prove to be a golden ticket in different ways: from monitoring valuable construction equipment and furniture to ensuring backup security for vehicles.

*\* (National Cargo Security Council)*

03

CONTAINERS



VALUABLE GOODS



BACKUP TRACKING



TRAILERS



CONSTRUCTION EQUIPMENT



# ASSET TRACKER<sup>EASY</sup>

ASSET TRACKER<sup>EASY</sup> (TAT100) is an advanced tracking solution with a robust, practical and water-resistant (IP67) enclosure that, combined with different mounting accessories, is extremely easy to install. Developed on a low power Bluetooth chipset it gives us the possibility to put all of our knowledge into the unit and at the same time provide long battery life time. The unit is suited for tracking of valuable goods, wire reels, tools, construction equipment, elevators, containers and many more non-powered assets. It is a robust water-resistant solution with extremely easy mounting.



**BATTERY LIFETIME**  
Data sending up to 1000 records



**INGRESS PROTECTION**  
Water and dust resistant for outdoor integrations (IP67)



**ROBUST**  
Robust, small and easy to install



**OTA UPDATES**  
Convenient OTA (over-the-air) updating through user-friendly applications



**SCHEDULED RECORDS**  
Synchronized records sending and wake-up scenarios



**VARIOUS MOUNTING OPTIONS**  
Magnetic mount, strap and additional holder mounting possibilities



## TRAILER TRACKING

Trailers are considered one of the most popular ways of transporting valuable assets. Sometimes equipment inside the trucks are left unattended for longer periods and they can be easy prey to thieves. Preventing theft from the trailer and real-time monitoring are achieved with our tracker that can be programmed to send alerts in case of an unauthorized attempt to open the truck. Our tracker can also monitor the state of separate parts of assets.



## VALUABLE ASSETS

Heavy machinery equipment, commercial generators, vehicles or, simply, boxes with expensive cargo are prone to theft whenever they are on the move or left in distant locations. Our tracker provides real-time tracking of the assets, therefore, you will receive up-to-date information about their movement or whenever they're idle, as well as instant alerts about unauthorized attempts to steal the cargo.



## CONSTRUCTION EQUIPMENT TRACKING

What comes at a heavy price and becomes an attractive target for thieves? Yes, it is the construction equipment. At construction sites, high-valued machinery and removable assets are very often located in an outdoor setting that can be stolen in an eye-blink. With the smart implementation of our tracker, a business owner can be sure that accurate GPS tracking will provide real-time information about the location of his equipment. Meanwhile, the sensors will rapidly react to unusual activity and send security alarm to the user platform or authorities.



## SEA CONTAINERS TRACKING

Sea container shipping has become one of the key methods of freight transportation that allows transporting large quantities of cargo. Valuable cargo theft risk is particularly sensitive when containers are at port. Asset Tracker Easy comes as a solution to fill the potholes in security. Loaded containers' state monitoring, theft detection and separate parcels monitoring and robust device technology – are you already interested?

# BLE ASSET TRACKER<sup>EASY</sup>

A hidden ace, a sleeping giant or simply the perfect backup pillar. These words can describe the advanced BLE ASSET TRACKER<sup>EASY</sup> (TAT100). It is a device for asset tracking and additional protection against vehicle theft. The key advantage of the solution is that it works as a secure and safe backup tracker, which periodically pings the master device over Bluetooth to check if it is still connected to the vehicle. Operating in this mode, the device could last even up to 5 years. Upon detecting the disconnection of the master device, the tracker starts working as a main autonomous tracker. That is why the unit can operate in an offline mode for the most of the time, and if it is necessary - wake up and send emergency alerts.



**BATTERY LIFETIME**  
3 to 5 years battery life in BLE communication mode only



**ADVANCED COMMANDS**  
Rearm/suspend theft detection scenario



**ONLINE TRACKING**  
5 days of frequent tracking in online mode after theft detection



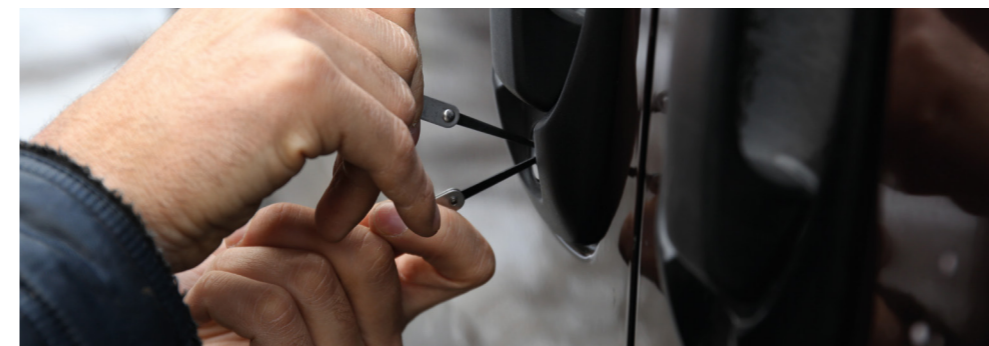
**EASY INSTALLATION**  
Plug & play installation and automatical pairing with the main tracker



**INGRESS PROTECTION**  
Water and dust resistant for outdoor integrations (IP67)



**DYNAMIC MOUNTING**  
Magnetic mount, strap and additional holder mounting possibilities



## ANTI-THEFT SOLUTION

If your vehicle is not appropriately protected, it would not come as a surprise to have it stolen. Our tracker comes as a solution when implementing anti-theft measures. With long battery life and accurate GPS tracking, the vehicle's location can be monitored at all times. In the event of tracker unauthorizedly jammed or removed from the vehicle, instant alert is sent to the owner of a vehicle or authorities.



## BACKUP SOLUTION

These days the thieves are becoming more intelligent, as they can now easily dance the ways around your car's security and disable the tracking signal with a digital RF detector or portable signal jammer. In this case our device operates as a backup tracker with a link to the main tracker via Bluetooth connection. Device periodically syncs up with the master device to check the status if it is connected to the vehicle. If the main tracker is not detected then it wakes up and transmits the information about vehicle's whereabouts.



## LEASING BACKUP SECURITY SERVICES

In recent years the car leasing market has been booming. People are shifting to car leasing and removing the headache of maintenance. However, it is needless to say that theft prevention proves to be an issue for rental businesses, as there are at least 4 million vehicles stolen every year around the globe, while around 69% of the recovered vehicles are damaged. Our solution can help not only reduce the risks of theft but also avoid damages resulting from them. In case a thief removes or disrupts the main tracker, the loss of Bluetooth connection enables the Asset Tracker Easy to work as a main tracker and send GNSS/GSM signal with an alarm immediately.



## BLUETOOTH SMART TRAILER TRACKING

Sometimes it is difficult to manage all the trailers and all the assets that are being delivered. Tracking the trailer all the time becomes a headache since it requires external power source. Our tracker can be fitted on the trailer independently and sync up with Teltonika Telematics unit automatically every time the truck changes. It will provide information about unauthorised moving, truck changes and with additional sensors it will be possible to monitor other data - trailer opening (light or magnetic sensor), temperature, humidity and other.

# ASSET TRACKER<sup>PLUS</sup> LTE & ASSET TRACKER<sup>PLUS</sup> M1

High-standard tracking of containers, construction equipment, furniture and other non-powered assets can now be achieved with the newest Teltonika Mobility. Our Asset Tracker is now available with the extension of PLUS LTE & PLUS M1 series. What does it mean? With the implementation of LTE or M-1-based tracker, you will be able to monitor your valuables almost everywhere in the world, since the technology boasts an extended network coverage and offers improved data transmission. The unit is perfect for assets that are on the move, as the device can operate in deep sleep mode and send reports or alarms in accordance with the pre-programmed configuration. Water-resistant case and convenient mounting contribute to the crucial features ensuring smooth monitoring of your assets.

COMING  
SOON



GET UPDATED  
ON REALESE!



**BATTERY LIFETIME**  
Data sending up to 1000 records



**INGRESS PROTECTION**  
Water and dust resistant for outdoor integrations (IP67)



**SCHEDULED RECORDS**  
Synchronized records sending and wake-up scenarios



**ROBUST**  
Robust, small and easy to install



**OTA UPDATES**  
Convenient OTA (over-the-air) updating through user-friendly applications



**VARIOUS MOUNTING OPTIONS**  
Magnetic mount, strap and additional holder mounting possibilities



## TRAILER TRACKING

Trailers are considered one of the most popular ways of transporting valuable assets. Sometimes equipment inside the trucks are left unattended for longer periods and they can be easy prey to thieves. Preventing theft from the trailer and real-time monitoring are achieved with our tracker that can be programmed to send alerts in case of an unauthorized attempt to open the truck. Our tracker can also monitor the state of separate parts of assets.



## VALUABLE ASSET TRACKING

Every business owner knows the price of stolen valuable cargo. Heavy machinery equipment, generators, vehicles or, simply, boxes with expensive cargo are prone to theft whenever they are on the move or left in distant locations. Our tracker provides real-time tracking of the assets, therefore, you will receive up-to-date information about their movement or whenever they're idle, as well as instant alerts about unauthorized attempts to steal the equipment.



## CONSTRUCTION EQUIPMENT TRACKING

What comes at a heavy price and becomes an attractive target for thieves? Yes, it is the construction equipment. At construction sites, high-valued machinery and removable assets are very often located in an outdoor setting that can be stolen in an eye-blink. With the smart implementation of our tracker, a business owner can be sure that accurate GPS tracking will provide real-time information about the location of his equipment. Meanwhile, the sensors will rapidly react to unusual activity and send security alarm to the user platform or authorities.



## SEA CONTAINERS TRACKING

Sea container shipping has become one of the key methods of freight transportation that allows transporting large quantities of cargo. Valuable cargo theft risk is particularly sensitive when containers are at port. Asset Tracker Easy comes as a solution to fill the potholes in security. Loaded containers' state monitoring, theft detection and separate parcels monitoring and robust device technology – are you already interested?

# ACCESSORIES



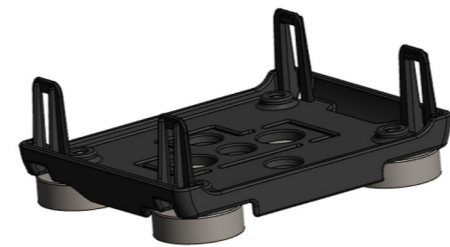
BLUETOOTH BEACONS



TEMPERATURE SENSORS



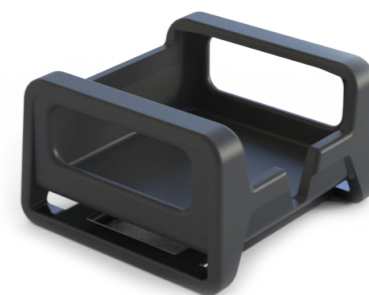
MOVEMENT SENSORS



TAT HOLDER



STAINLESS STEEL STRAP



TMT250 HOLDER



TMT250 MAGNETIC USB CABLE



MAGNET CONTACT SENSOR



TEMPERATURE AND HUMIDITY SENSOR



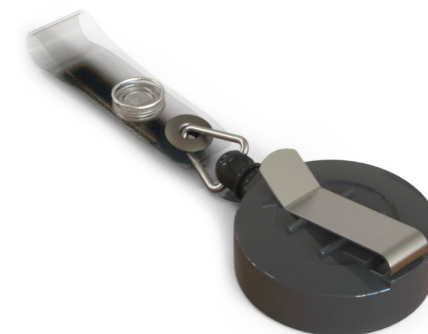
EN12830 CERTIFIED TEMPERATURE SENSOR



BLUE SLIM ID



BLUETOOTH TEMPERATURE & HUMIDITY SENSOR



ID BADGE REEL WITH CLIP



MULTI CHARGING DOCKING STATION



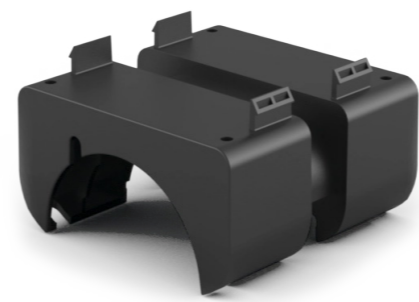
TAT100 DISTANCE SENSORS



TAT100 CONNECTOR LID



MINEW B7



TST100 HOLDER (SEGWAY ES4)



TST100 HOLDER (SEGWAY MAX)



TST100 SHARING CONNECTOR (ES2)



WALL CHARGER (EU)

# FOTA WEB

## AUTOMATIC DEVICE FIRMWARE AND CONFIGURATION UPDATE TOOL

We are proud to present you the updated FOTA WEB, the tool that enables our tracker firmware upgrades and its configuration changes remotely without a dedicated application. Everything can be accessed using standard web browser from any device. It is a powerful solution that helps to manage Teltonika GPS devices swiftly and efficiently.

### FIRMWARE AND CONFIGURATION

Make it easy - remotely configure single or group of all our devices. Save configuration templates for different scenarios and conveniently use when needed.

### EASY WEB ACCESS

With FOTA you will have easy access to your devices from anywhere – no additional tools or operating system restrictions – just open your browser and login to the platform!

### HISTORY

You will always know what actions have been taken with each device at any given time.

### USER-FRIENDLY EXPERIENCE

All your purchased devices come pre-registered to FOTA and appear on your account right after the purchase.

# TELTONIKA CONFIGURATOR

## EASY MANAGEMENT TOOL FOR YOUR AUTONOMOUS SOLUTIONS

Teltonika configurator software is advanced but simple your autonomous solutions management tool. Single tool allows management of all new series devices. With one software you can make configuration updates, firmware updates, devices diagnostics, status checks and debug. All can be done over Bluetooth or USB cable, and predefined tooltips will make everything simple as functions descriptions are only one click away!

- Easy management – one tool for all new series devices
- Tooltips – functions descriptions in the configurator
- Status window – live device monitoring and maintenance

# GLOBAL CONNECTIVITY SOLUTION

Teltonika Mobility prepaid SIM and eSIM Connectivity Solution for Things makes IoT simple. It leverages a global mobile network to connect Teltonika devices anywhere and provides control over connectivity and device activation, also to manage, and analyze your SIM cards and data usage through an easy-to-use internal IoT platform. With the help of this solution, Teltonika Mobility trackers reduce recurring roaming costs in 110 countries globally.

## ONE SUPPLIER – FULL SOLUTION

The fewer suppliers, the more time you save avoiding multiple negotiations, shipping problems and other issues. Get SIM card and Teltonika Mobility tracker in one.

## ONE-TIME PAYMENT – 500 MB, 5 YEARS

Just one payment and you get Global data bundle of 500 MB for the next 5 years!

## EASY TO TOP-UP

If the data limit is reached before the plan ends, you can top-up under the same conditions to renew your connectivity for the next 5 years again.

## ESIM AVAILABILITY

A smart, rewritable, and multi-network module that can either be embedded into the device itself or written onto a plastic removable card.

## WORLDWIDE NETWORK COVERAGE

Global network coverage encompasses 110 countries in Africa, Asia, Europe, the Americas and Oceania to avoid any communication disruptions.

## ACTIVATION BY THE NEEDS

The 5-year Global Connectivity Solution plan is not activated until a device is turned on and connected to the cellular network.

# CROWD-SUPPORT FORUM

THE MORE YOU ASK,  
THE MORE ANSWERS YOU GET.

- User support
- Sharing knowledge in real time
- Live discussions
- Configuration examples

Crowd-support forum  
<https://community.teltonika.lt/>



# WIKI KNOWLEDGE BASE

USE OF INFORMATION BECAME EASY

- Detailed product information
- Usage scenarios
- Solutions detailed information
- Quick start guides
- FAQ

Wiki knowledge base  
<https://wiki.teltonika.lt/>



FEATURE	E-SCOOTER TRACKER <sup>PLUS</sup> (TFT100)	E-FORKLIFT TRACKER <sup>PLUS</sup> (TFT100)	KICK E-SCOOTER TRACKER <sup>EASY</sup> (TST100)	E-MOBILITY TRACKER <sup>PRO</sup> (EMB1XY)
Auto/Manual Geofencing zones	50	50	50	50
GPS Sleep	✓	✓	✓	✓
Online deep Sleep	✓	✓	✓	✓
Deep Sleep	✓	✓	-	✓
Ultra Deep Sleep	✓	✓	-	✓
Overspeeding detection	✓	✓	-	✓
FOTA WEB Firmware update	✓	✓	✓	✓
FOTA WEB Configuration upate	✓	✓	✓	✓
Remote LOG download	✓	✓	✓	✓
GPRS commands	✓	✓	✓	✓
Immobilizer	✓	✓	-	-
Jamming detection	✓	✓	✓	✓
Unplug detection	-	-	✓	✓
Towing detection	✓	✓	-	✓
Crash detection	✓	✓	-	✓
ManDown / FallDown	✓	✓	✓	✓
Trip / Odometer	✓	✓	✓	✓
Eco / Green driving	✓	✓	-	✓
Excessive idling	✓	✓	-	-
1-wire support	✓	✓	-	-
iButton support	✓	✓	-	-
DOUT control via call	✓	✓	-	✓
DOUT control via Ignition	✓	✓	-	✓
Manual CAN	✓	✓		✓
Manual J1939	✓	✓		✓
Last Known Position	✓	✓	✓	✓
Permanent link	✓	✓	✓	✓
Timestamp backup	✓	✓	-	✓

FEATURE	E-SCOOTER TRACKER <sup>PLUS</sup> (TFT100)	E-FORKLIFT TRACKER <sup>PLUS</sup> (TFT100)	KICK E-SCOOTER TRACKER <sup>EASY</sup> (TST100)	E-MOBILITY TRACKER <sup>PRO</sup> (EMB1XY)
Protocols	UDP/TCP/SMS	UDP/TCP/SMS	UDP/TCP/SMS	UDP/TCP/SMS
Data sending	Main, Duplicate and Backup servers	Main, Duplicate and Backup servers	Main, Duplicate and Backup servers	Main, Duplicate and Backup servers
Security	ConPguration password, SMS login and password, Authorized GSM numbers list	ConPguration password, SMS login and password, Authorized GSM numbers list	ConPguration password, SMS login and password, Authorized GSM numbers list, Alarm played through a buzzer	ConPguration password, SMS login and password, Authorized GSM numbers list
Time Synchronization	GPS, NITZ, NTP	GPS, NITZ, NTP	GPS, NITZ, NTP	GPS, NITZ, NTP
Supported peripherals	Temperature and humidity sensor, Universal BLE sensors support	Temperature and humidity sensor, Universal BLE sensors support	Temperature and humidity sensor, Universal BLE sensors support, Solebe BT lock and Segway wired lock support**	Universal BLE sensors support
<b>FULLY SUPPORTED COMMUNICATION PROTOCOLS</b>				
CAN	Bosch, Askoll, Default J1939, Manual J1939, Manual CAN	Bosch, Askoll, Default J1939, Manual J1939, Manual CAN	-	Manual CAN, Manual J1939, Bafang
RS485	Super Soco	Super Soco	-	TBD
RS232	-	-	-	-
UART	e-Boater	e-Boater	Segway MAX, ES2/ES4, Xiaomi 356, FitRaider	TBD

FEATURE	E-FORKLIFT TRACKER (TFT100)	E-SCOOTER TRACKER <sup>PLUS</sup> (TFT100)	KICK E-SCOOTER TRACKER <sup>EASY</sup> (TST100)	E-MOBILITY TRACKER <sup>PRO</sup> (EMB1XY)
<b>MODULE</b>				
Name	TM2500	TM2500	TM2500	Quectel LTE EG91 (CAT-1) / Quectel LTE BG96 (CAT-M1)
Technology	GSM, GPRS, GNSS, BLUETOOTH (4.0 + LE)	GSM, GPRS, GNSS, BLUETOOTH (4.0 + LE)	GSM, GPRS, GNSS, BLUETOOTH (4.0 + LE)	LTE, GSM, GPRS, BLUETOOTH (4.0 + LE)
<b>GNSS</b>				
GNSS	GPS, GLONASS, GALILEO, BEIDOU, SBAS, QZSS, DGPS, AGPS	GPS, GLONASS, GALILEO, BEIDOU, SBAS, QZSS, DGPS, AGPS	GPS, GLONASS, GALILEO, BEIDOU, SBAS, QZSS, DGPS, AGPS	GNSS GPS, GLONASS, SBAS, QZSS, BeiDou, Galileo
GNSS Module				Super low power SONY GNSS chip
Receiver, Tracking sensitivity, Accuracy	33 channel, -165 dBm, < 3m	33 channel, -165 dBm, < 3m	33 channel, -165 dBm, < 3m	-161 dBm, <1m
GNSS receiver start times	Hot < 1s, Warm < 25s, Cold < 35s	Hot < 1s, Warm < 25s, Cold < 35s	Hot < 1s, Warm < 25s, Cold < 35s	Hot / Cold start <2s/ <35s
<b>CELLULAR</b>				
Technology	GSM	GSM	GSM	LTE CAT1 / LTE CAT-M1/LTE NB-IoT/GSM/ Bluetooth 4.2 + LE
2G bands	Quad-band 850 / 900 / 1800 / 1900 MHz	Quad-band 850 / 900 / 1800 / 1900 MHz	Quad-band 850 / 900 / 1800 / 1900 MHz	B2 / B3 / B5 / B8
4G bands				"LTE FDD: B1/B2/B3/B4/B5/B8/B12/B13/B18/B19/B20/B28 WCDMA: B8 (for CAT-1) LTE TDD: B39 (for CAT-M1)"
Data transfer	GPRS Multi-Slot Class 12 (up to 240 kbps), GPRS Mobile Station Class B	GPRS Multi-Slot Class 12 (up to 240 kbps), GPRS Mobile Station Class B	GPRS Multi-Slot Class 12 (up to 240 kbps), GPRS Mobile Station Class B	"LTE FDD: Max 10 Mbps (DL) / Max. 5 Mbps (UL) (for CAT-1) GPRS: Max. 107 kbps (DL) / Max. 85.6 kbps (UL) LTE: Max. 375 kbps (DL) / Max. 375 kbps (UL) (for CAT-M1)"
Data support	SMS (text/data)	SMS (text/data)	SMS (text/data)	SMS (text/data)
<b>POWER</b>				
Input voltage range	10-97V DC with overvoltage protection	10-97V DC with overvoltage protection	8-50V DC with overvoltage protection	5-97V DC with overvoltage protection
Internal battery	1800 mAh Li-Ion battery 3.7 V (6.66 Wh) internal back-up battery	1800 mAh Li-Ion battery 3.7 V (6.66 Wh) internal back-up battery	170 mAh Li-ion battery 3.7 V internal back-up battery	600 mAh Li-Po internal back-up battery

FEATURE	E-FORKLIFT TRACKER (TFT100)	E-SCOOTER TRACKER <sup>PLUS</sup> (TFT100)	KICK E-SCOOTER TRACKER <sup>EASY</sup> (TST100)	E-MOBILITY TRACKER <sup>PRO</sup> (EMB1XY)
<b>INTERFACE</b>				
Modifications*	CAN, RS485, RS232, UART	CAN, RS485, RS232, UART	UART	"CAN modification – CAN interface, 3 x DIN/DOUT, 1 x AIN/DIN; RS485 modification – RS485 interface, 3 x DIN/DOUT, 1 x AIN/DIN; UART modification - UART interface, 3 x DIN/DOUT, 1 x AIN/DIN;"
GNSS antenna	Internal High Gain	Internal High Gain	Internal High Gain	Internal High Gain / External High Gain**
GSM antenna	Internal High Gain	Internal High Gain	Internal High Gain	-
LTE antenna				Internal High Gain
Sensors	Accelerometer	Accelerometer	Accelerometer	Accelerometer/Gyroscope
Interface	2.0 Micro-USB, Micro-SIM with eSIM possibility, 128 MB internal flash memory (220'000 records)	2.0 Micro-USB, Micro-SIM with eSIM possibility, 128 MB internal flash memory (220'000 records)	2.0 Micro-USB, Micro-SIM, 128 MB internal flash memory	2.0 Micro-USB, Micro-SIM with eSIM possibility, 128 MB internal flash memory (220'000 records)
LED indication	2 status LED lights	2 status LED lights	2 status LED lights	3 status LED lights
Chipset				Ultra-low-power Bluetooth BlueNRG-232
Buzzer	-	-	Internal	-
<b>PHYSICAL SPECIFICATIONS</b>				
Dimensions	72,5 x 73 x 27,3 mm (L x W x H)	72,5 x 73 x 27,3 mm (L x W x H)	78 x 75 x 70 (L x W x H)	52 x 40 x 18 mm (L x W x H)
Weight			130g	TBD
Ingress Protection Rating	IP67	IP67	IP65	IP67

\*One modification per device.

\*\*External GNSS antenna for EMB110 and EMB115 only

# PERSONAL TRACKERS PRODUCT COMPARISON

FEATURE	MINI TRACKER <sup>EASY</sup> (TMT250)	WORKER BADGE <sup>PLUS</sup> (GH5200)	WORKER BADGE <sup>PRO LTE</sup> (PT1000)	MINI TRACKER <sup>PLUS</sup> (TMT260)
Auto/Manual Geofencing zones	50	50	50	50
Sleep modes	GPS Sleep, Online Deep Sleep, Deep Sleep, Ultra Deep Sleep	GPS Sleep, Online Deep Sleep, Deep Sleep, Ultra Deep Sleep	GPS Sleep, Online Deep Sleep, Deep Sleep, Ultra Deep Sleep	GPS Sleep, Online Deep Sleep, Deep Sleep, Ultra Deep Sleep
Overspeeding detection	✓	✓	✓	✓
FOTA WEB Firmware update	✓	✓	✓	✓
FOTA WEB Configuration upate	✓	✓	✓	✓
Remote LOG download	✓	✓	✓	✓
GPRS commands	✓	✓	✓	✓
Falldown	-	✓	✓	-
ManDown	✓	✓	✓	✓
Alarm scenario	✓	✓	✓	✓
Trip / Odometer	✓	✓	✓	✓
Permanent link	✓	✓	✓	✓
Protocols	UDP/TCP/SMS	UDP/TCP/SMS	UDP/TCP/SMS	UDP/TCP/SMS
Data sending	Main, Duplicate and Backup servers	Main, Duplicate and Backup servers	Main, Duplicate and Backup servers	Main, Duplicate and Backup servers
Security	Conpfiguration password, SMS login and password, Authorized GSM numbers list	Conpfiguration password, SMS login and password, Authorized GSM numbers list	Conpfiguration password, SMS login and password, Authorized GSM numbers list	Conpfiguration password, SMS login and password, Authorized GSM numbers list
Time Synchronization	GPS, NITZ, NTP	GPS, NITZ, NTP	GPS, NITZ, NTP	GPS, NITZ, NTP
Supported peripherals	Headset, Temperature and humidity sensor, Universal BLE sensors support	Headset, Temperature and humidity sensor, Universal BLE sensors support	Headset, Temperature and humidity sensor, Universal BLE sensors support	Headset, Temperature and humidity sensor, Universal BLE sensors support
Real Time tracking	✓	✓	✓	✓
2 way voice call	-	✓	✓	-
Smart periodical GPRS tracking based on time, movement, distance and angle	✓	✓	✓	✓
Power saving	✓	✓	✓	✓
Records saving in to internal memory	✓	✓	✓	✓
Possibility to enter SIM PIN code	✓	✓	✓	✓
Notification on a low battery	✓	✓	✓	✓
SMS requests	✓	✓	✓	✓

FEATURE	MINI TRACKER <sup>EASY</sup> (TMT250)	WORKER BADGE <sup>PLUS</sup> (GH5200)	WORKER BADGE <sup>PRO LTE</sup> (PT1000)	MINI TRACKER <sup>PLUS</sup> (TMT260)
Notifications by sound and vibration	✓	✓	✓	✓
Action on call feature	✓	✓	✓	✓
Loudspeaker call mode	-	✓	✓	-
Bluetooth Beacons	✓	✓	✓	✓
Events from I/O elements detection and sending via GPRS or SMS	✓	✓	✓	✓
Proximity	-	✓	✓	-
Proximity with RUTX	-	✓	✓	-
Proximity pause	-	✓	✓	-
Proximity advertising while charging	-	✓	✓	-
Home Zone	✓	✓	✓	✓
BLE inside tracking	✓	✓	✓	✓
Amber Alert	-	✓	✓	-
Last Known Position Feature	✓	✓	✓	✓
Power On/Off events GPRS and SMS	-	✓	✓	-
Disable Power Off by button	✓	✓	✓	✓
Hold GPS fix for 30sec	-	✓	✓	-
Movement/No movement Event	✓	✓	✓	✓
Tamper detection	✓	-	-	✓
Event on a pressed button	✓	✓	✓	✓
Safe charging	✓	✓	✓	✓
Fall detection	-	✓	✓	-
Beacon list up to 100	✓	✓	✓	✓
On demand tracking	✓	✓	✓	✓

FEATURE	MINI TRACKER <sup>EASY</sup> (TMT250)	MINI TRACKER <sup>PLUS</sup> (TMT260)	MINI TRACKER <sup>PRO LTE</sup> (TMT261)	MINI TRACKER <sup>PRO MI</sup> (TMT262)
<b>MODULE</b>				
Name	TM2500	TM2500, BlueNRG	TM2500, Quectel BG96 LTE CAT M1	TMT2500, Quectel EG91 LTE CAT 1
Technology	GSM, GPRS, GNSS, BLUETOOTH (4.0 + LE)	GSM, GPRS, GNSS, BLUETOOTH (4.0 + LE)	LTE Cat M1/Cat NB1/EGPRS module, BLUETOOTH (4.0 + LE)	Multi-band LTE, UMTS/HSPA+ and GSM/GPRS/EDGE coverage, , BLUETOOTH (4.0 + LE)
<b>GNSS</b>				
GNSS	GPS, GLONASS, GALILEO, BEIDOU, SBAS, QZSS, DGPS, AGPS	GPS, GLONASS, GALILEO, BEIDOU, SBAS, QZSS, DGPS, AGPS	GPS, GLONASS, GALILEO, BEIDOU, SBAS, QZSS, DGPS, AGPS	GPS, GLONASS, GALILEO, BEIDOU, SBAS, QZSS, DGPS, AGPS
Receiver, Tracking sensitivity, Accuracy	33 channel, -165 dBm, < 3m	33 channel, -165 dBm, < 3m	33 channel, -165 dBm, < 3m	33 channel, -165 dBm, <3m
GNSS receiver start times	Hot < 1s, Warm < 25s, Cold < 35s	Hot < 1s, Warm < 25s, Cold < 35s	Hot < 1s, Warm < 25s, Cold < 35s	Hot < 1s, Warm < 25s, Cold < 35s
<b>CELLULAR</b>				
Technology	GSM	GSM	LTE	LTE
2G bands	Quad-band 850 / 900 / 1800 / 1900 MHz	Quad-band 850 / 900 / 1800 / 1900 MHz	B1/B2/B3/B4/B5/B8/B12/B13/B18/B19/B20/B25/B26/B28/B39	B1/B3/B7/B8/B20/B28A
4G bands	GPRS Multi-Slot Class 12 (up to 240 kbps), GPRS Mobile Station Class B	GPRS Multi-Slot Class 12 (up to 240 kbps), GPRS Mobile Station Class B	LTE FDD/LTE TDD/EDGE/GPRS	LTE FDD/ DC-HSPA+/WCDMA/EDGE/GPRS
Data support	SMS (text/data)	SMS (text/data)	SMS (text/data), VoLTE	SMS (text/data), VoLTE
<b>POWER</b>				
Input voltage range	5 V DC	5 V DC	5 V DC	5 V DC
Internal battery	800 mAh Li-Ion 3.8 V	800 mAh Li-Ion 3.8 V	800 mAh Li-Ion 3.8 V	800 mAh Li-Ion 3.8 V
<b>INTERFACE</b>				
GNSS/GSM/Bluetooth	Internal High Gain	Internal High Gain	Internal High Gain	Internal High Gain
LTE antenna	-	-	Internal High Gain	Internal High Gain
WiFi antenna				Internal antenna
Sensors	Accelerometer	Accelerometer	Accelerometer	Accelerometer
Interface	Magnetic-USB, 128 MB internal flash memory (220'000 records), 2 Configurable buttons	Magnetic-USB, 128 MB internal flash memory (220'000 records), 2 Configurable buttons	Magnetic-USB, 128 MB internal flash memory (220'000 records), 2 Configurable buttons	Magnetic-USB, 128 MB internal flash memory (220'000 records), 2 Configurable buttons
LED indication	1 RGB LED	1 RGB LED	1 RGB LED	1 RGB LED
<b>PHYSICAL SPECIFICATIONS</b>				
Dimensions, Weight, IP rating	44 x 43 x 20 (mm), 50 g, IP67	44 x 43 x 20 (mm), 50 g, IP67	44 x 43 x 20 (mm), 50 g, IP67	44 x 43 x 20 (mm), 50 g, IP67

FEATURE	WORKER BADGE <sup>PLUS</sup> (GH5200)	PT1000	PT1001	PT1001
<b>MODULE</b>				
Name	TM2500	TM2500, Quectel EG91 LTE CAT-1-EX	TM2500, Quectel BG96-NON-GNSS LTE CAT M1	TM2500, Espress if Systems ESP8266EX Wi-Fi
Technology	GSM, GPRS, GNSS, BLUETOOTH (4.0 + LE)	GSM, GPRS, GNSS, BLUETOOTH (4.0 + LE)	GSM, GPRS, GNSS, BLUETOOTH (4.0 + LE)	GSM, GPRS, GNSS, BLUETOOTH (4.0 + LE)
<b>GNSS</b>				
GNSS	GPS, GLONASS, GALILEO, BEIDOU, SBAS, QZSS, DGPS, AGPS	GPS, GLONASS, GALILEO, BEIDOU, SBAS, QZSS, DGPS, AGPS	GPS, GLONASS, GALILEO, BEIDOU, SBAS, QZSS, DGPS, AGPS	GPS, GLONASS, GALILEO, BEIDOU, SBAS, QZSS, DGPS, AGPS
Receiver, Tracking sensitivity, Accuracy	33 channel, -165 dBm, < 3m	33 channel, -165 dBm, < 3m	33 channel, -165 dBm, < 3m	33 channel, -165 dBm, <3m
GNSS receiver start times	Hot < 1s, Warm < 25s, Cold < 35s	Hot < 1s, Warm < 25s, Cold < 35s	Hot < 1s, Warm < 25s, Cold < 35s	Hot < 1s, Warm < 25s, Cold < 35s
<b>CELLULAR</b>				
Technology	GSM	LTE	LTE	LTE
2G bands	Quad-band 850 / 900 / 1800 / 1900 MHz	Quad-band 850 / 900 / 1800 / 1900 MHz	Quad-band 850 / 900 / 1800 / 1900 MHz	Quad-band 850 / 900 / 1800 / 1900 MHz
4G bands	GPRS Multi-Slot Class 12 (up to 240 kbps), GPRS Mobile Station Class B	GPRS Multi-Slot Class 12 (up to 240 kbps), GPRS Mobile Station Class B	GPRS Multi-Slot Class 12 (up to 240 kbps), GPRS Mobile Station Class B	GPRS Multi-Slot Class 12 (up to 240 kbps), GPRS Mobile Station Class B
Data support	SMS (text/data)	SMS (text/data)	SMS (text/data)	SMS (text/data)
<b>POWER</b>				
Input voltage range	5 V DC with overvoltage protection	5 V DC with overvoltage protection	5 V DC with overvoltage protection	5 V DC with overvoltage protection
Internal battery	1050 mAh Li-Ion 3.7 V	1050 mAh Li-Ion 3.7 V	1050 mAh Li-Ion 3.7 V	1050 mAh Li-Ion 3.7 V
<b>INTERFACE</b>				
GNSS/GSM/Bluetooth	Internal High Gain	Internal High Gain	Internal High Gain	Internal High Gain
LTE antenna	-	Internal High Gain, CAT1	Internal High Gain, CAT1	Internal High Gain, CAT1
WiFi antenna				Internal antenna
Sensors	Accelerometer	Accelerometer	Accelerometer	Accelerometer
Interface	2.0 Micro-USB, Micro-SIM with eSIM possibility, 128 MB internal flash memory (220'000 records), 5 Configurable buttons	2.0 Micro-USB, Micro-SIM with eSIM possibility, 128 MB internal flash memory (220'000 records), 5 Configurable buttons	2.0 Micro-USB, Micro-SIM with eSIM possibility, 128 MB internal flash memory (220'000 records), 5 Configurable buttons	2.0 Micro-USB, Micro-SIM with eSIM possibility, 128 MB internal flash memory (220'000 records), 5 Configurable buttons
LED indication	3 LEDs	3 LEDs	3 LEDs	3 LEDs
<b>PHYSICAL SPECIFICATIONS</b>				
Dimensions, Weight, IP rating	93 x 64 x 10 (mm), 80 g, IP30	93 x 64 x 10 (mm), 80 g, IP30	93 x 64 x 10 (mm), 80 g, IP30	93 x 64 x 10 (mm), 80 g, IP30

FEATURE	ASSET TRACKER <sup>EASY</sup> (TAT100)	BACKUP ASSET TRACKER <sup>EASY</sup> (TAT100)	ASSET TRACKER <sup>PLUS 1</sup> (TAT140)	ASSET TRACKER <sup>PLUS M1</sup> (TAT141)
Manual geofence	✓	✓	✓	✓
FOTA WEB Firmware update	✓	✓	✓	✓
FOTA WEB Configuration upate	✓	✓	✓	✓
Remote LOG download	✓	✓	✓	✓
GPRS commands	✓	✓	✓	✓
Protocols	UDP/TCP/SMS	UDP/TCP/SMS	UDP/TCP/SMS	UDP/TCP/SMS
Data sending	Main, Duplicate and Backup servers	Main, Duplicate and Backup servers	Main, Duplicate and Backup servers	Main, Duplicate and Backup servers
Security	Configuration password, SMS login and password, Authorized GSM numbers list, TLS	Configuration password, SMS login and password, Authorized GSM numbers list, TLS	Configuration password, SMS login and password, Authorized GSM numbers list, TLS	Configuration password, SMS login and password, Authorized GSM numbers list, TLS
Time Synchronization	GPS, NITZ, NTP	GPS, NITZ, NTP	GPS, NITZ, NTP	GPS, NITZ, NTP
Tilt detection	✓	✓	✓	✓
Time zone	✓	✓	✓	✓
Records sending by schedule	✓	✓	✓	✓
Tamper detection	✓	✓	✓	✓
Tracking On Stop/On Move	✓	✓	✓	✓
GNSS tracking	✓	✓	✓	✓
LBS tracking	✓	✓	✓	✓
Recovery mode	✓	✓	✓	✓
Bluetooth beacon support	✓	✓	✓	✓
Bluetooth sensors support	✓	✓	✓	✓
Static Navigation	✓	✓	✓	✓
Movement detection	✓	✓	✓	✓
Backup tracker	✓	✓	✓	✓

FEATURE	ASSET TRACKER <sup>EASY</sup> (TAT100)	BACKUP ASSET TRACKER <sup>EASY</sup> (TAT100)	ASSET TRACKER <sup>PLUS 1</sup> (TAT140)	ASSET TRACKER <sup>PLUS M1</sup> (TAT141)
<b>MODULE</b>				
Name	Teltonika TM2500	TM2500	TM2500, Quectel LTE EG91 (CAT-1)	Quectel LTE BG96 (CAT-M1)
Technology	GSM/GPRS/GNSS/Bluetooth	GSM/GPRS/GNSS/Bluetooth	LTE/GSM/GPRS/GNSS/Bluetooth	LTE/GSM/GPRS/GNSS/Bluetooth
<b>GNSS</b>				
GNSS	GPS, GLONASS, GALILEO, BEIDOU, SBAS, QZSS, DGPS	GPS, GLONASS, GALILEO, BEIDOU, SBAS, QZSS, DGPS	GPS, GLONASS, GALILEO, BEIDOU, SBAS, QZSS, DGPS	GPS, GLONASS, GALILEO, BEIDOU, SBAS, QZSS, DGPS
Receiver, Tracking sensitivity, Accuracy	33 channel, -165 dBm, < 3m	33 channel, -165 dBm, < 3m	33 channel, -165 dBm, < 3m	33 channel, -165 dBm, <3m
GNSS receiver start times	Hot < 1s, Warm < 25s, Cold < 35s	Hot < 1s, Warm < 25s, Cold < 35s	Hot < 1s, Warm < 25s, Cold < 35s	Hot < 1s, Warm < 25s, Cold < 35s
<b>CELLULAR</b>				
Technology	GSM/GPRS Multi-Slot Class 12 (up to 240 kbps)/ GPRS Mobile Station Class B	GSM/GPRS Multi-Slot Class 12 (up to 240 kbps)/ GPRS Mobile Station Class B	LTE CAT-1 / GSM	LTE CAT-M1 / GSM
2G bands	Quad-band 850 / 900 / 1800 / 1900 MHz	Quad-band 850 / 900 / 1800 / 1900 MHz	Quad-band 850 / 900 / 1800 / 1900 MHz	Quad-band 850 / 900 / 1800 / 1900 MHz
4G bands	-	-	LTE FDD: B1/B2/B3/B4/B5/B8/B12/B13/B18/B19/B20/B28 WCDMA: B8 (for CAT-1)	LTE FDD: B1/B2/B3/B4/B5/B8/B12/B13/B18/B19/B20/B28 LTE TDD: B39 (for CAT-M1)
Data support	SMS (text/data)	SMS (text/data)	SMS (text/data)	SMS (text/data)
<b>POWER</b>				
Internal battery	2x 2700mAh extremely low self-discharge Li-SOCl2 batteries 3.6V (19.44 Wh)	2x 2700mAh extremely low self-discharge Li-SOCl2 batteries 3.6V (19.44 Wh)	2x 2700mAh extremely low self-discharge Li-SOCl2 batteries 3.6V (19.44 Wh)	2x 2700mAh extremely low self-discharge Li-SOCl2 batteries 3.6V (19.44 Wh)
<b>INTERFACE</b>				
GNSS, GSM antenna	Internal High Gain	Internal High Gain	Internal High Gain	Internal High Gain
Chipset	Ultra-low-power Bluetooth BlueNRG-232	Ultra-low-power Bluetooth BlueNRG-232	Ultra-low-power Bluetooth BlueNRG-232	Ultra-low-power Bluetooth BlueNRG-232
Sensors	Accelerometer	Accelerometer	Accelerometer	Accelerometer
USB	2.0 Micro-USB	2.0 Micro-USB	2.0 Micro-USB	2.0 Micro-USB
SIM	Micro-SIM, eSIM possible	Micro-SIM, eSIM possible	Micro-SIM, eSIM possible	Micro-SIM, eSIM possible
Memory	128 MB internal flash memory (220'000 records)	128 MB internal flash memory (220'000 records)	128 MB internal flash memory (220'000 records)	128 MB internal flash memory (220'000 records)
LED indication	1 Green LED	1 Green LED	1 Green LED	1 Green LED
Buttons	On/Off switch	On/Off switch	On/Off switch	On/Off switch
<b>PHYSICAL SPECIFICATIONS</b>				
Dimensions, Weight, IP rating	78x63x28 (mm), 105 g, IP68	78x63x28 (mm), 105 g, IP68	78x63x28 (mm), 105 g, IP68	78x63x28 (mm), 105 g, IP68
<b>BLUETOOTH</b>				
Specifications	Compliant with Bluetooth v4.2 + LE	Compliant with Bluetooth v4.2 + LE	Compliant with Bluetooth v4.2 + LE	Compliant with Bluetooth v4.2 + LE
Supported peripherals	BLE temperature and humidity sensor, BLE beacons support	BLE temperature and humidity sensor, BLE beacons support	BLE temperature and humidity sensor, BLE beacons support	BLE temperature and humidity sensor, BLE beacons support

**Teltonika Mobility**

<https://teltonika-mobility.com/>

+370 521 27472

[info@teltonika.lt](mailto:info@teltonika.lt)



All products



Connect  
with us



Follow us on  
social media